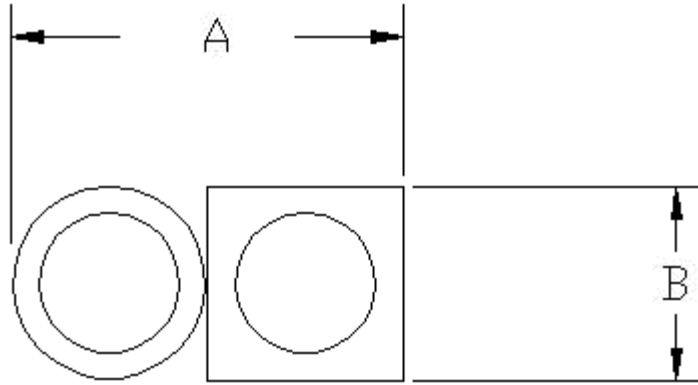


Product Spec Sheet

Model – Klear Speaker Cable



Model	Width A	Height B	Max Length	Strand Count	Strand Size / Material
KLE10BL	11mm (.433")	5.5mm (.219")	1000 Feet	462 x 2	36 Gauge Bare OFC
KLE12BL	9mm (.355")	4.5mm (.177")	2000 Feet	294 x 2	36 Gauge Bare OFC
KLE16BL	6.4mm (.252")	3.2mm (.125")	2000 Feet	112 x 2	36 Gauge Bare OFC

Overview – Klear Kable Speaker wire is basic side-by-side, oversized speaker cable. Utilizing high strand counts of fine, pure Oxygen Free Copper make the Klear Kable a very flexible speaker wire. Applications include home and mobile audio. The rectangular profile allows for ease of installation under carpets or around base boards. The cable is finished in a translucent blue PVC jacket.

Notes – The round/square profile used throughout the Klear Kable line allows for easy polarity indicators without looking for the text. General rule of thumb is the conductor with text is + throughout the installation. This only a guideline and as long as the installer is consistent with his/her terminations, it can be defined either way.